



***Professional Services
Procurement Bulletin
2008-01
Bullitt County***

<i>COUNTY</i>	<i>Bullitt</i>
<i>ROUTE</i>	<i>KY 44</i>
<i>DISTRICT</i>	<i>5—Louisville</i>
<i>ITEM NO</i>	<i>5-347.50</i>
<i>PROJECT DESCRIPTION</i>	<i>Reconstruction of KY 44 from Mt. Washington Bypass (US 31E) East 2 Miles towards Taylorsville.</i>
<i>PROJECT MANAGER</i>	<i>Aman Razavi, P.E.</i>
<i>USER DIVISION</i>	<i>Highway Design</i>
<i>APPROXIMATE FEE</i>	<i>\$900,000—Preliminary and Final Design</i>
<i>PROJECT FUNDING</i>	<i>State Funds (SP)</i>
<i>PURPOSE AND NEED</i>	<i>Improve traffic operation , safety and minimize congestion by reconstruction KY 44 from Mt. Washington Bypass towards Taylorsville.</i>
<i>PROJECT LENGTH</i>	<i>Approximately 2.0 miles</i>
<i>METHOD OF DESIGN</i>	<i>The selected consultant shall utilize the CADD Standards for Highway Plans (version 2.08) policy in the development of the Highway Plans.</i>
<i>DBE REQUIREMENT</i>	<i>None</i>

SCOPE	<i>The selected consultant will provide engineering services for Phase I preliminary and Phase II final roadway design, including the preparation of any design studies, drainage design, right of way plans, construction plans, traffic control plans and cost estimates.</i>
SPECIAL INSTRUCTIONS	<i>None</i>
AVAILABLE STUDIES	<i>None</i>
PHOTOGRAMMETRIC SERVICES	<i>Aerial photography and manuscripts in DGN format will be made available to the selected consultant.</i>
STRUCTURE DESIGN	<i>The selected consultant shall do the necessary engineering services to determine the preliminary sizes of the bridges and other drainage structures. Structure design will be performed by Department. Pre-qualification in the area of structure design is not required to be identified in the consultant's Response to Announcement.</i>
GEOTECHNICAL SERVICES	<i>Department</i>
TRAFFIC	<i>Traffic projections and related information will be provided by the Department.</i>
ENVIRONMENTAL	<i>The Consultant will be responsible for the preparation of an environmental overview.</i>
UTILITY DESIGN	<i>None</i>
MAP	<u><i>Static Map</i></u> <u><i>Aerial Map</i></u> <u><i>Interactive Map</i></u>

PREQUALIFICATION REQUIREMENTS

ROADWAY DESIGN

- *Rural Roadway Design >\$250,000*
- *Urban Roadway Design >\$250,000*
- *Surveying*

ENVIRONMENTAL ARCHAEOLOGY AND OTHER SERVICES

- *Prehistoric*
- *Historic*
- *Highway Noise*
- *Air Quality*
- *Cultural Historic*
- *Environmental Document Writing and Coordination*
- *Socioeconomic*

AQUATIC/TERRESTRIAL ECOSYSTEMS

- *Fisheries*
- *Macroinvertebrates*
- *Water Quality*
- *Botany*
- *Zoology*
- *Wetlands*

HAZMAT/UST □

- *Preliminary Site Assessment*

PROJECT SCHEDULE & MILESTONES

<i>RESPONSE DATE</i>	<i>August 8, 2007 4:30 p.m. (Frankfort Time)</i>
<i>SELECTION COMMITTEE DATE MEETING</i>	<i>September 5, 2007</i>
<i>PRE-DESIGN CONFERENCE</i>	<i>September 17, 2007</i>
<i>TENTATIVE DEADLINE FOR CONSULTANT FEE PROPOSAL</i>	<i>October 15, 2007</i>
<i>CONTRACT NEGOTIATIONS</i>	<i>November 5, 2007</i>
<i>NOTICE TO PROCEED</i>	<i>January 7, 2007</i>
<i>PRELIMINARY LINE & GRADE INSPECTION</i>	<i>May 1, 2008</i>
<i>FINAL JOINT INSPECTION</i>	<i>October 1, 2008</i>
<i>RIGHT OF WAY PLANS</i>	<i>January 7, 2009</i>
<i>FINAL PLANS</i>	<i>April 1, 2009</i>

The selected consultant is expected to meet the scheduled milestone dates

EVALUATION FACTORS

- 1. Relative experience of consultant personnel assigned to project team with highway projects for KYTC and/or for federal, local or other state governmental agencies. (10 points)*
- 2. Capacity to comply with project schedule. (10 points)*
- 3. Past record of performance on projects of similar type and complexity. (10 points)*
- 4. Project approach and proposed procedures to accomplish the services for the project. (10 points)*
- 5. Consultant's Kentucky office where work is to be performed. (2 points)*

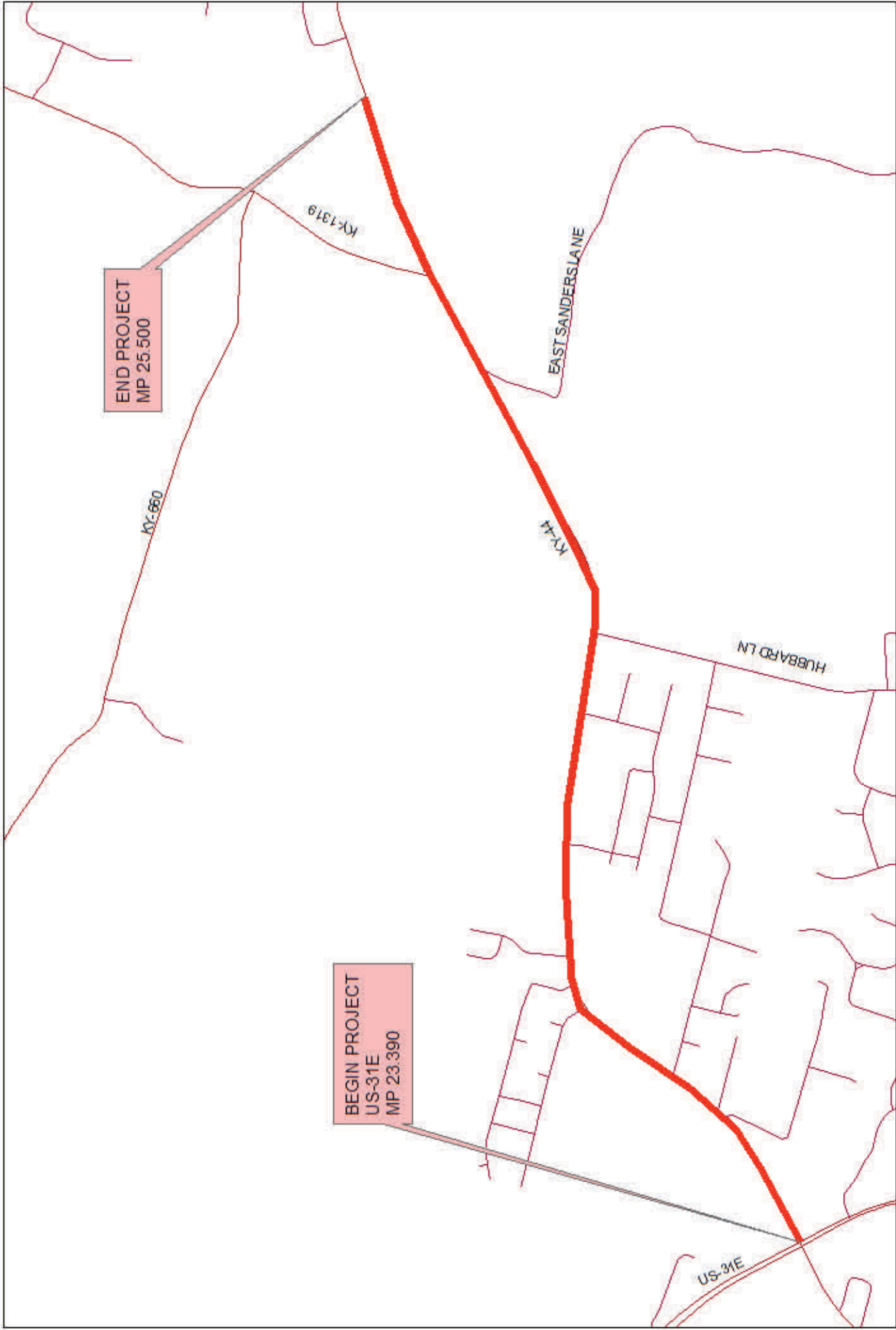
75% - 100% of work accomplished in Kentucky offices - 2 points

26% - 74% of work accomplished in Kentucky offices - 1 point

0% - 25% of work accomplished in Kentucky offices - 0 points

SELECTION COMMITTEE MEMBERS

- 1. Aman Razavi, P.E., User Division*
- 2. Ananias Calvin III, P.E., User Division*
- 3. Ted Merryman, Secretary's Pool*
- 4. Shari Greenwell, Secretary's Pool*
- 5. Howard Cruse, Governor's Pool*

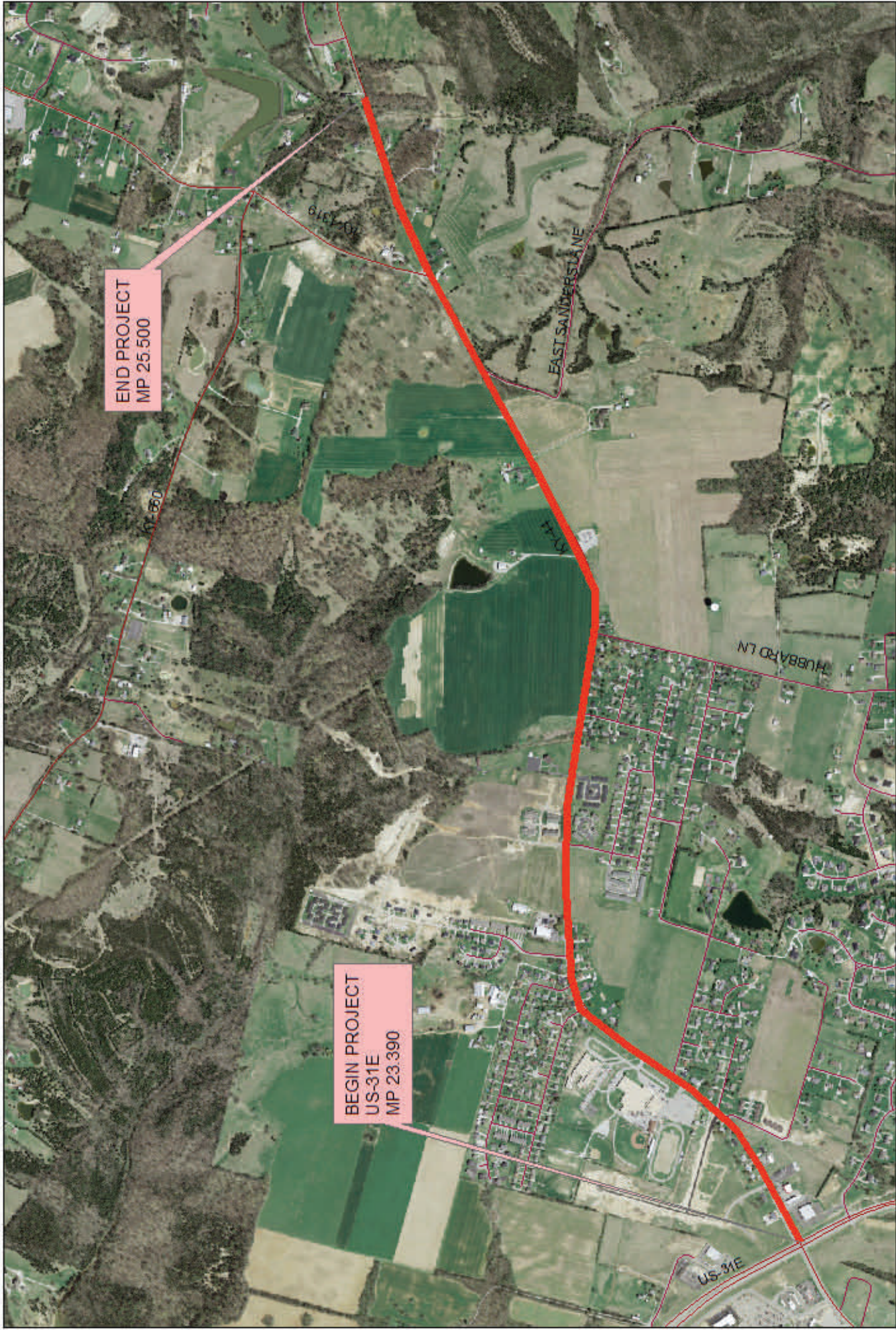


ITEM NO. 05-347.50
 KY-44
 BULLITT COUNTY, KY



- Legend**
- d5lo ca arc
 - D5_Alrds_m_SPN





ITEM NO. 05-347.50
 KY-44
 BULLITT COUNTY, KY



Legend

-  d5lo ca arc
-  D5_Alrds_m_SPN

